

1924 2ND AVE N

GREAT POTENTIAL FOR FIRST FLOOR SPACE



LADD REAL ESTATE



THREE STORY BUILDING

GREAT WALKABILITY

23,500 SF building

[Link to map](#)

This property was redeveloped in 2017 and is occupied by a quality office user on the upper two floors and has a turn key retail space on the first floor. This is at the heart of two prime roads in downtown Birmingham. Close walking proximity to many amenities. Nearby residential, retail and office.

- ✓ BASEMENT: STORAGE/SPEAK EASY
- ✓ ACROSS FROM PARKING DECK
- ✓ STREET PARKING
- ✓ LEASE IN PLACE FOR 2 FLOORS
- ✓ \$3,350,000



Lot size 140' x 50' or 7,000SF



LADD REAL ESTATE

Contact us for more information or to schedule a site visit. Attached are conceptual floor plans for a restaurant on the first floor including "as built" plans. We have other properties within the block that are for sale from our group.

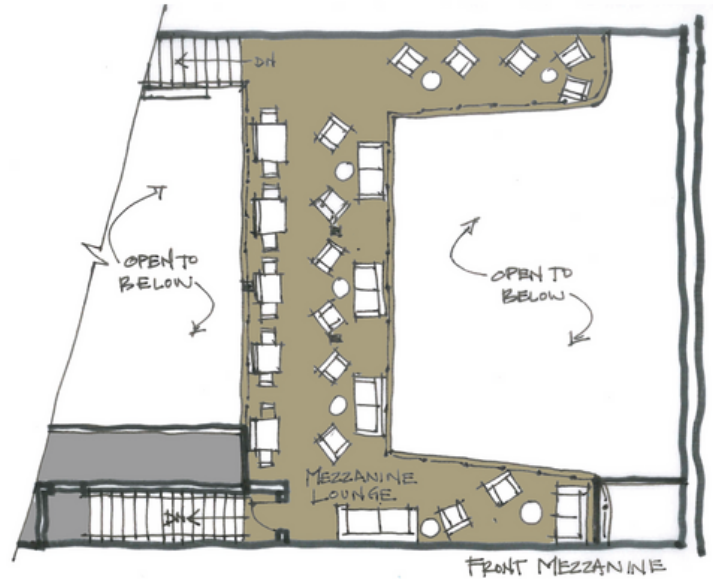
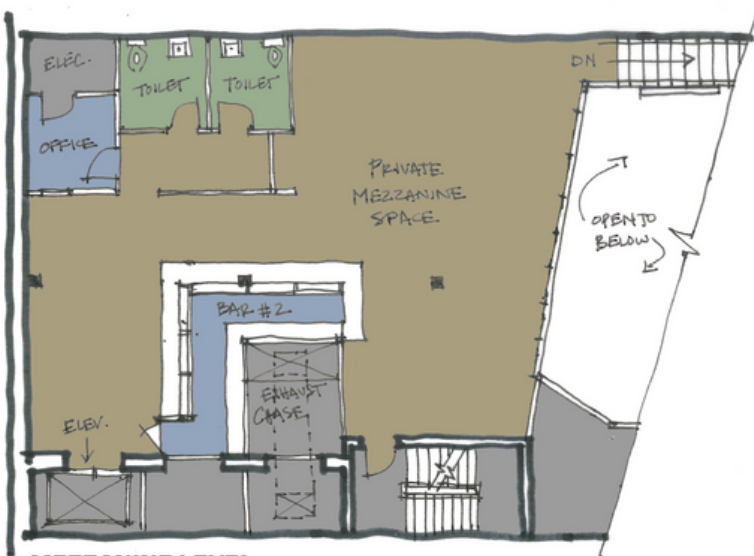
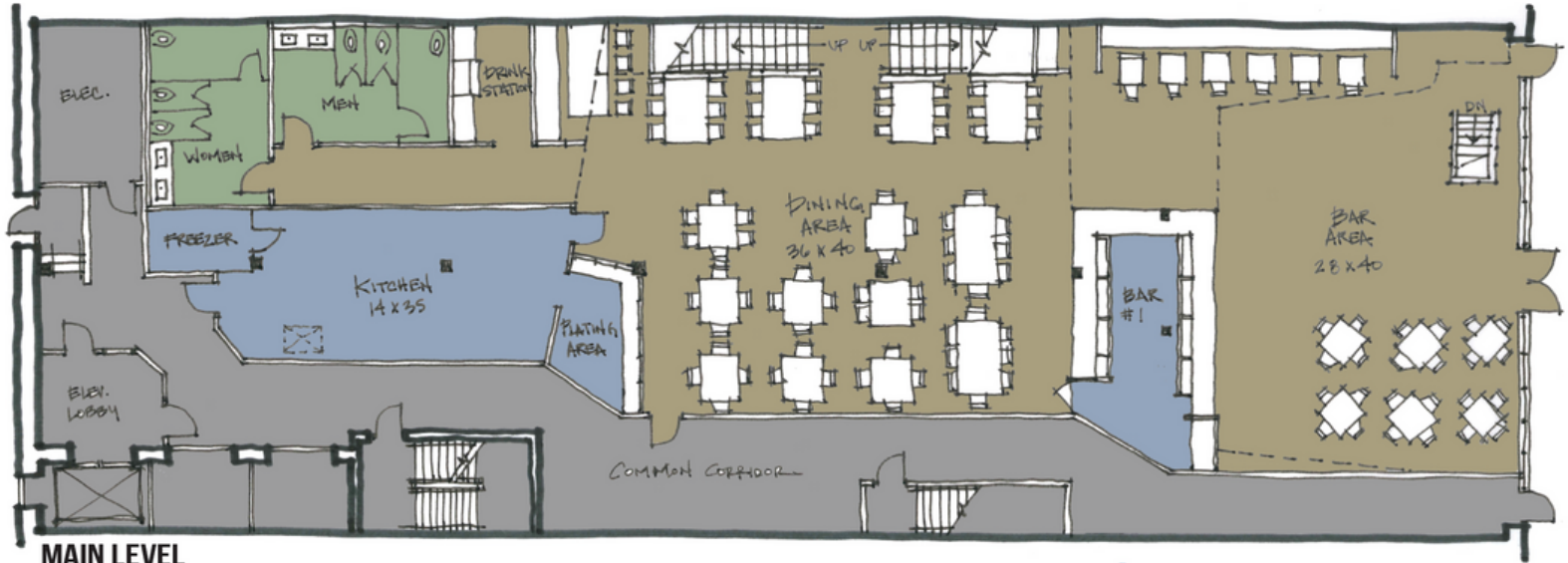
Ladd Tucker 205-868-4684

Ladd@LaddMgt.com



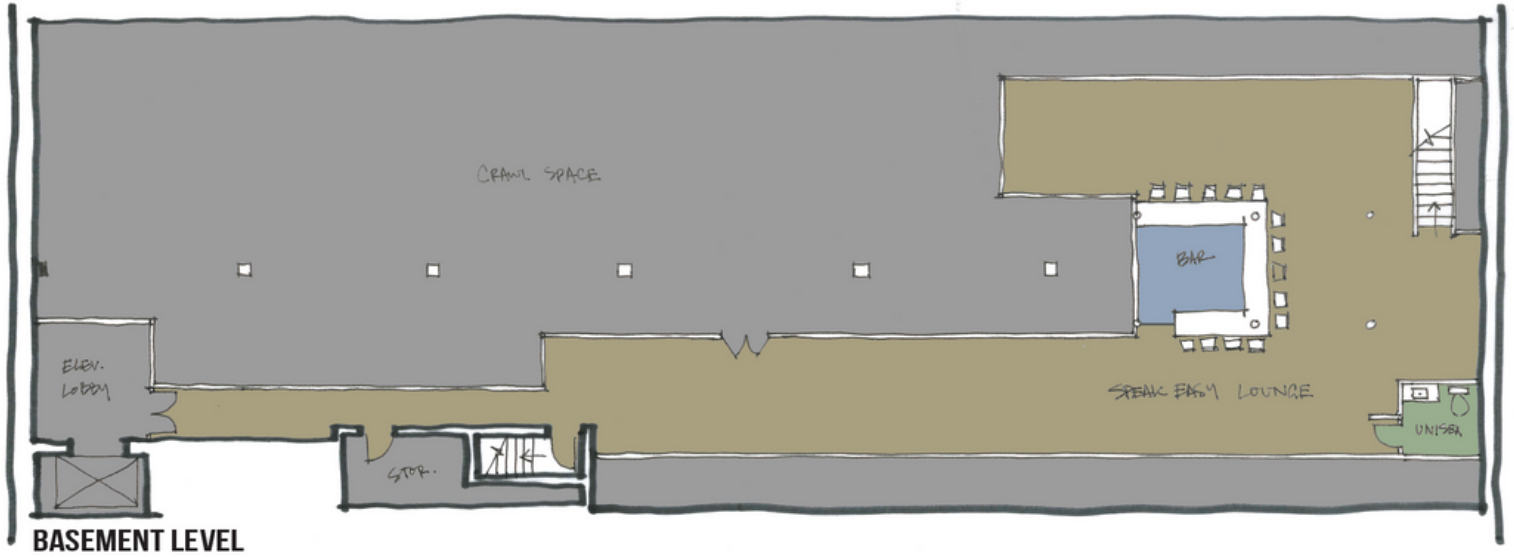
WWW.LADDMGT.COM/FORSALE

FIRST FLOOR

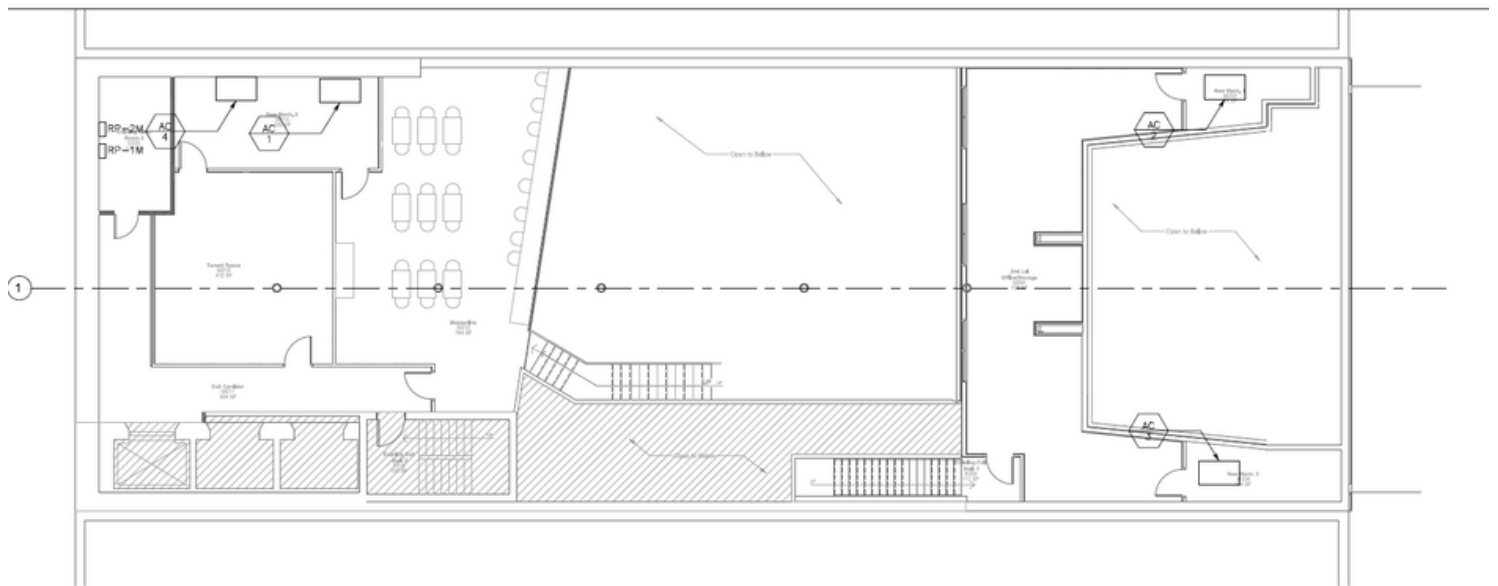


BASEMENT

CONCEPTUAL SPEAKEASY



AS BUILT



AS BUILT

